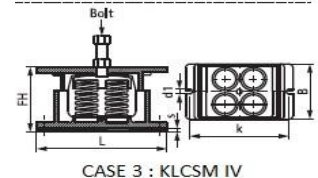
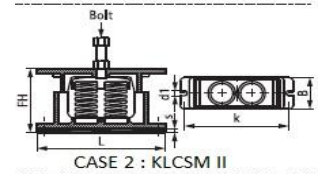
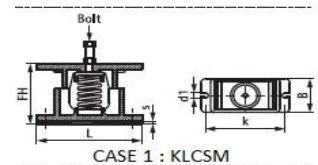
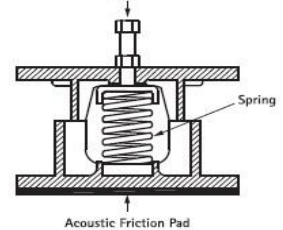
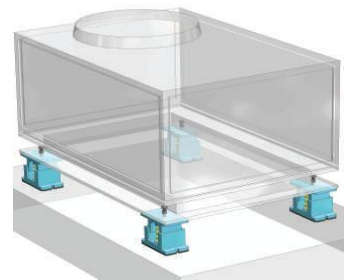


## CLOSE SPRING MOUNT

### FEATURE AND BENEFITS

- \* Closed Spring Mount design provides horizontal stability, high loading capacity and protective spring enclosure
- \* All mounts have external leveling arrangement, capable of compensating for full static deflection
- \* Inner walls of lower casting have resilient rubber snubbers
- \* Deflection is at rated load with 15% tolerance
- \* All mounts have approximately 50% overload capacity
- \* Mountings must be adjusted so that upper housing clears lower housing by at least 6 mm and not more than 12 mm
- \* Application examples include : Chiller, AHU's, pumps, centrifugal / axial fans' condensing units, roof top packaged units, reciprocating compressors, DG sets, punch presses, drop hammers, and floor pipe supports (normally) at first few pipe support points leding from isolated equipment.)
- \* Springs powder coated
- \* Designed to meet BS1726, class B



Product Code	Colour Code	Bolt	L mm	B mm	s mm	R mm	k mm	FH mm	Deflection mm	Max Load (N)
KLCSM 60	Yellow	M12	160	92	5	M10	147	116	25	600
KLCSM 100	Black	M12	160	92	5	M10	147	116	25	1000
KLCSM 160	White	M12	160	92	5	M10	147	116	25	1600
KLCSM 200	Green	M12	160	92	5	M10	147	116	25	2000
KLCSM 250	Blue	M12	160	92	5	M10	147	116	25	2500
KLCSM 300	Red	M16	200	115	10	M12	180	158	25	3000
KLCSM 400	Purple	M16	200	115	10	M12	180	158	25	4000
KLCSM 500	Grey	M16	200	115	5	M12	147	116	25	5000
KLCSM 600	Green	M16	200	115	10	M12	180	158	25	6000
KLCSM 800	Blue	M16	200	115	10	M12	180	158	25	8000
KLCSM 1050	Yellow	M16	200	115	10	M12	180	158	25	10500
KLCSM 1250	Black	M16	200	115	10	M12	180	158	25	12500
KLCSM II/600	Red	M20	285	115	10	M16	265	163	25	6000
KLCSM II/800	Purple	M20	285	115	10	M16	265	163	25	8000
KLCSM II/1000	Grey	M20	285	115	10	M16	265	163	25	10000
KLCSM II/1200	Green	M20	285	115	10	M16	265	163	25	12000
KLCSM II/1600	Blue	M20	285	115	10	M16	265	163	25	16000
KLCSM II/2100	Yellow	M20	285	115	10	M16	265	163	25	21000
KLCSM II/2500	Black	M20	285	115	10	M16	265	163	25	25000
KLCSM IV/1200	Red	M20	285	210	10	M16	265	163	25	12000
KLCSM IV/1600	Purple	M20	285	210	10	M16	265	163	25	16000
KLCSM IV/2000	Grey	M20	285	210	10	M16	265	163	25	20000
KLCSM IV/2400	Green	M20	285	210	10	M16	265	163	25	24000
KLCSM IV/3200	Blue	M20	285	210	10	M16	265	163	25	32000
KLCSM IV/4200	Yellow	M20	285	210	10	M16	265	163	25	42000
KLCSM IV/5000	Black	M20	285	210	10	M16	265	163	25	50000

### NOTE:-

- 1) Due to policy of continual improvement, the specifications are subject to change without prior notice.
- 2) Measurements are subject to 5% tolerance.
- 3) To achieve good sound suppressions do not over load fitting.