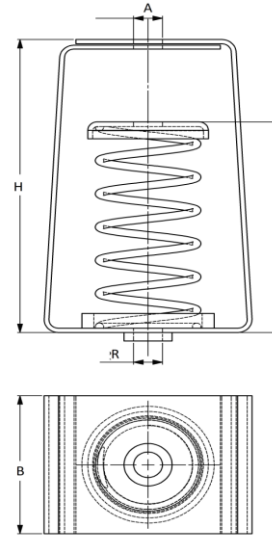


SPRING HANGER

FEATURE AND BENEFITS

- * Spring hangers are used to isolate suspended sources of both noise and vibration
- * Suspended mechanical equipment such as air handling units, FCU's, cabinet fans, piping and ductwork in close proximity to rotating mechanical equipment are typical applications of spring hangers
- * Colour coded springs as per load ratings
- * Outer diameter equal to at least 85% of working height
- * Springs designed for 50% overload capacity
- * Brackets and springs powder coated
- * Designed to meet BS1726, class B.



Product Code	Colour Code	A	B	H	L	R	Deflectio	Max Load (N)
		mm	mm	mm	mm	mm		
KLSH 20/25	White	10.5	38	70	57	M10	20	250
KLSH 20/30	Yellow	10.5	38	70	57	M10	20	300
KLSH 20/50	Purple	10.5	38	70	57	M10	20	500
KLSH 25/10	Purple	10.5	52	104	80	M10	25	100
KLSH 25/15	Yellow	10.5	52	104	80	M10	25	150
KLSH 25/20	Grey	10.5	52	104	80	M10	25	200
KLSH 25/30	Green	10.5	52	104	80	M10	25	300
KLSH 25/40	Light Blue	10.5	52	104	80	M10	25	400
KLSH 25/60	Green	12.5	65	138	96	M12	25	600
KLSH 25/100	Green	12.5	65	138	96	M12	25	1000
KLSH 25/160	Orange	12.5	65	138	96	M12	25	1600
KLSH 25/200	Red	12.5	65	138	96	M12	25	2000
KLSH 25/250	Purple	12.5	65	138	96	M12	25	2500
KLSH 25/300	Grey	16.5	85	157	115	M16	25	3000
KLSH 25/400	Orange	16.5	85	157	115	M16	25	4000
KLSH 25/500	Brown	16.5	85	157	115	M16	25	5000
KLSH 25/600	Black	16.5	85	157	115	M16	25	6000
KLSH 25/800	Red	16.5	85	157	115	M16	25	8000
KLSH 25/1050	White	16.5	85	157	115	M16	25	10500
KLSH 25/1250	Green	16.5	85	157	115	M16	25	12500

NOTE:-

- 1) Due to policy of continual improvement, the specifications are subject to change without prior notice.
- 2) Measurements are subject to 5% tolerance.
- 3) To achieve good sound suppressions do not over load fitting.