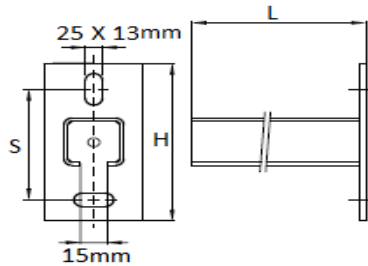
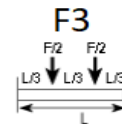
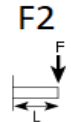
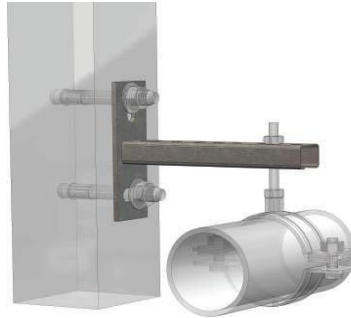


## ELECTROPLATED CANTILEVER ARM

### FEATURE AND BENEFITS

- \* Wall plate with welded C-profile
- \* Perfectly suitable for hanging to the ceiling
- \* Slots at 90° to each other to simplify fixing Strut Rail
- \* CO2 welded
- \* A continuous graduated centimetre scale on one side
- \* Suitable for in- and outdoor applications
- \* Stands min. 1.000 hours salt spray test (max. 5% red rust) according to ISO 9227
- \* Material: - Steel, other materials on request
- \* Electrogalvanized as per ASTM B 633



Product Code	Channel Size	Slot Size mm	(S) mm	Lenght (L) mm	(H) mm	Max Load				Microns (μ)	Box Quantity
						F1 (N)	F2 (N)	F3 (N)	F4 (N)		
KLEPCA41/150	41 x 41	13 X 25	90	150	130	6100	3000	3000	2000	8 - 15	20
KLEPCA41/300	41 x 41	13 X 25	90	300	130	3000	1500	1500	1000	8 - 15	20
KLEPCA41/450	41 x 41	13 X 25	90	450	130	2000	1000	1000	650	8 - 15	5
KLEPCA41/600	41 x 41	13 X 25	90	600	130	1500	750	750	500	8 - 15	2
KLEPCA41/750	41 x 41	13 X 25	90	750	130	1250	600	600	400	8 - 15	1
KLEPCA21/150	21 X 21	13 X 25	70	150	110	2000	1000	1000	650	8 - 15	20
KLEPCA21/300	21 X 21	13 X 25	70	300	110	1000	500	500	330	8 - 15	20
KLEPCA21/450	21 X 21	13 X 25	70	450	110	670	330	330	220	8 - 15	5

NOTE:-

1). OTHER DIMENSIONS AVAILABLE ON REQUEST.