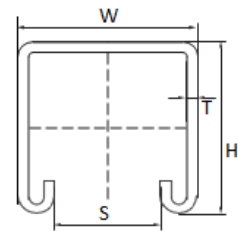
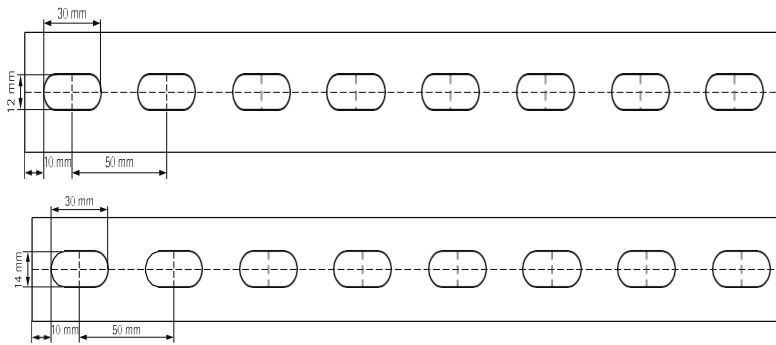


ELECTROPLATED STRUT CHANNEL

FEATURE AND BENEFITS

- * Universal rail system
- * With continuous perforation (on request without perforation)
- * Distance between rail end and first hole is always equal
- * A continuous graduated centimetre scale on one side
- * Yield strength 240 N/mm²
- * Tested for fire safety
- * Material: -Steel, other materials on request
- * Electrogalvanized as per ASTM B 633



Product Code	Size			Lenght	S	Microns	Bundle Quantity
	W	H	T	L			
	mm	mm	mm	mtr.			
KLEPSC21-1.5	41	21	1.5	2,3 or 6	22	8 - 15	12
KLEPSC41-1.5	41	41	1.5	2,3 or 6	22	8 - 15	8
KLEPSC21-2	41	21	2	2,3 or 6	22	8 - 15	12
KLEPSC41-2	41	41	2	2,3 or 6	22	8 - 15	8
KLEPSC21-2.5	41	21	2.5	2,3 or 6	22	8 - 15	12
KLEPSC41-2.5	41	41	2.5	2,3 or 6	22	8 - 15	8

Product Code	Unit	KLEPSC21-1.5	KLEPSC41-1.5	KLEPSC21-2	KLEPSC41-2	KLEPSC21-2.5	KLEPSC41-2.5
Area of Shear	cm ²	0.42	1.02	0.55	1.34	0.67	1.67
Moment of Inertia (xx)	cm	0.7	3.87	0.88	4.59	1.03	5.87
Moment of Inertia (yy)	cm	3.34	5.68	4.25	6.99	5.07	8.76
Min. Section Modulus	cm	0.6	1.76	0.75	2.18	0.89	2.72
Wrapping Costant	cm	17.49	114.17	21.34	138.49	24.34	171.52
Torsional Constant	cm	0.01	0.02	0.02	0.03	0.06	0.07
Allowable Bending Stress	kN/cm ²	21.82	21.82	21.82	21.82	21.82	21.82
Allowable Shear Stress	kN/cm ²	12.6	12.6	12.6	12.6	12.6	12.6
Modulus of Elasticity	kN/cm ²	21	21	21	21	21	21

NOTE:-

- 1). REQUESTED SLOT SIZE CAN BE MANUFACTURED.